



Microsoft Dynamics AX & Syscomstyle

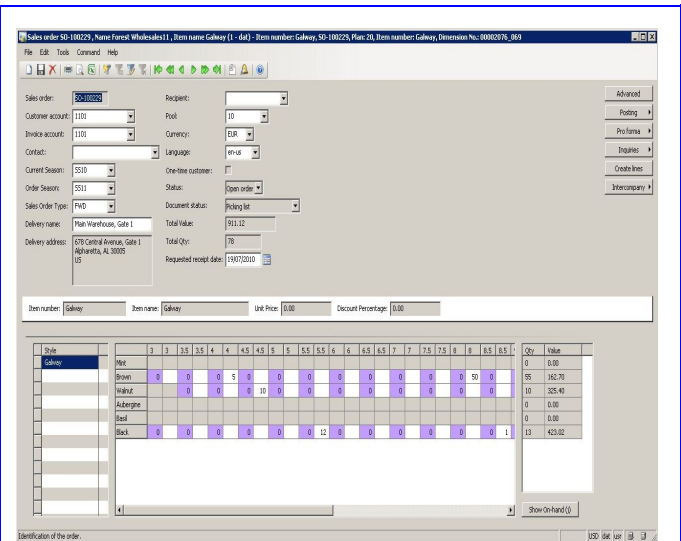


Specialist software solutions for the apparel & footwear industries

Syscom combines industry expertise with specific functionality available in Microsoft Dynamics AX to help apparel and footwear companies meet their unique business requirements. Syscomstyle is a specialist suite of software modules that are highly functional, providing full visibility across your “style” business operations. Syscomstyle ensures that accurate, up-to-date information is provided for improved efficiency and customer service, using single product files and stock records which are available for enquiry or update anytime and in real time. It increases business efficiency without complexity and integrates seamlessly into the Dynamics AX ERP software and has been tried and tested over many years of development.

Syscomstyle Dynamic Matrix

Designed specifically for the Apparel and Footwear industries, Dynamic Matrix delivers the functionality that allows companies to develop and manage style related products efficiently through their manufacturing and supply chain processes. The ability to rapidly use pre-defined size ranges and colours or even copy from an existing style makes the setting up of a new product straightforward using the core style builder in the Dynamic Matrix. The standard inventory dimensions within Dynamics AX have been enhanced to include matrix displays and reports where colour and sizes are used, making stock management a simple process, even when large numbers of variants are possible. Product ranges and seasons are easily controlled, allowing for management of sales and purchasing to within business specific categories.



Features

- Global range, size, colour & season management
- Uses standard AX dimension functionality
- Easy to upgrade
- Integrated into SOP, POP & Inventory

	3	3.5	4	4.5	5	5.5	6	6.5	7	7.5	8	8.5	9
Mint													
Brown	0	0	0	5	0	0	0	0	0	0	0	0	0
Walnut		0	0		10	0							
Aubergine													
Basil													
Black	0	0	0	0	0	0	0	0	0	0	0	0	12

Benefits

- Rapid set up or edit of stock
- Simple order entry
- Reduced paperwork
- Fewer administrative errors



01384 344 244

www.syscom.plc.uk



Syscomstyle Reservations

Syscomstyle Reservations is a powerful tool to ease the allocation of stock. It is easy to use, and supports rapid implementation. Syscoms advanced reservations functionality allows you to know what is in your warehouse and what sales orders you are able to satisfy at all times. The functions have highly advanced selection parameters, making it a perfect fit for many day to day business criteria. The configuration of the functions allow for selection of customers based upon priority to ensure your key customers receive the customer service and supply they expect. In addition, advanced reservations can run on an order value basis to ensure higher value orders are expedited first, hence smoothing out the cash flow of the business. The reservation functions maintain and display running balances of the full reservation run.

Customer account	Name	Requested quantity	Order type	Amount currency	Estimated amount	Credit Inventory	Date Value	Contracting Date Value	Request	Percent Available	Value Picked
SO-00014	1201	Pa...	18/02/2011	Sale order	0.00	0.00	15,500.00	0.00	0.00	0.00	0.00
SO-00014	1201	Pa...	18/02/2011	Sale order	0.00	0.00	10,000.00	0.00	0.00	0.00	0.00
SO-00014	1201	Pa...	18/02/2011	Sale order	0.00	0.00	15,500.00	0.00	0.00	0.00	0.00
SO-00014	1201	Pa...	18/02/2011	Sale order	0.00	0.00	10,000.00	0.00	0.00	0.00	0.00
SO-00014	1201	Pa...	18/02/2011	Sale order	0.00	0.00	10,000.00	0.00	0.00	0.00	0.00
SO-00014	1201	Pa...	18/02/2011	Sale order	0.00	0.00	10,000.00	0.00	0.00	0.00	0.00
SO-00014	1201	Pa...	18/02/2011	Sale order	0.00	0.00	10,000.00	0.00	0.00	0.00	0.00
SO-00014	1201	Pa...	18/02/2011	Sale order	0.00	0.00	10,000.00	0.00	0.00	0.00	0.00
SO-00014	1201	Pa...	18/02/2011	Sale order	0.00	0.00	10,000.00	0.00	0.00	0.00	0.00
SO-00014	1201	Pa...	18/02/2011	Sale order	0.00	0.00	10,000.00	0.00	0.00	0.00	0.00

Reservations offer a single point of contact, allowing for bulk packing slip creation. Creation of key documents by batch, automatic or manual. Utilising our unique “what if?” functionality, it is possible for the business to run multiple reservation/de-reservation simulation runs, followed by manual amendments where required before creation of packing slips with a single click.

Features

Automatic allocation of stock against orders based on customer selection criteria such as customer priority • Manual Pick List override facility • Bin location picking • Reviews orders based on a timeframe • Allows manipulation before processing • View by percentage complete, order value, margin & cost • Production of suggested re-order reports • Automatic conversion to Purchase Orders

Benefits

Allows you to prioritise so that priority customers are serviced and remain happy • Superior control across your business of all stock allocation and stock purchases • Automatic order processes improving efficiency and customer service • The ability to efficiently match the sales order book to available warehouse stock

Syscomstyle Container Management Module

An accurate and detailed view of inventory across all levels and facilities is a crucial business tool. Knowing the location, status, value and lead-times of inventory is essential to making effective business decisions. Syscomstyle Container Management provides complete control and visibility of container movement between suppliers and your warehouse, identifying what inventory is in which containers and where the container is in transit and its current status. Improving supply chain responsiveness and helping to manage the rising growth of offshoring to keep control of lead times from suppliers to maximise the sales potential.

Container No	Po Number	Line Num	Blanket order	Line No	Item number	Vendor account	Supplier
CT459	00184_048	1.0000000000	00187_048	1.0000000000	ESB-300-9FD3	3000	
CT459	00184_048	1.0000000000	00187_048	2.0000000000	ESB-300-9FD3	3000	
CT459	00184_048	2.0000000000	00206_048	3.0000000000	HA-575W	3004	
CT459	00184_048	1.0000000000	00300_048	2.0000000000	HA-800W	3004	
CT459	00184_048	2.0000000000	00300_048	1.0000000000	SL-500	3004	
CT459	00184_048	1.0000000000	00301_048	3.0000000000	HA-575W	3004	
CT459	00184_048	2.0000000000	00301_048	2.0000000000	HA-800W	3004	
CT459	00184_048	1.0000000000	00301_048	1.0000000000	SL-500	3004	
CT459	00184_048	2.0000000000	00302_048	3.0000000000	HA-575W	3004	

Features

Tracks inbound containers with associated purchase orders and inventory by SKU • Written in Dynamics AX • Easy to upgrade • Integrated into purchase order processing

Benefits

Reduce logistics cost • Improve inventory management • Improve customer satisfaction • Reduce inventory costs

Syscomstyle Consolidated Production

Syscomstyle Consolidated Production module is ideal for apparel businesses that supply a large amount of ready to wear stock to its customers in various sizes, shapes, colours and styles. It integrates seamlessly into Microsoft Dynamics AX, allowing your production routines to operate more efficiently, saving you valuable time and money.

What makes the Syscom module unique is that, at the click of a button, Consolidated Production will allow you to make a consolidated production order taking into consideration ALL of the outstanding sales lines on a sales order and creates one consolidated order, with one set of paperwork. The consolidated pick list that is created from the order will display the total amount of components needed to make the finished goods. Different varieties of BOM for each product are also handled with ease in Syscomstyle Consolidated Production. It clearly displays how much raw material you require in order to manufacture the complete sales order as opposed to an individual sales order line in standard AX.



The operator will then pick up the raw materials they require and will enter the estimated or actual consumption. The system will cope with this information being entered before or after you have created your production order giving you total flexibility. Standard AX carries out this operation individually.

Specialist “bundling” routines programmed through easy to use screens, allow complete control of the production line as the product is produced, whilst keeping all of the original consolidated order details. Syscomstyle Consolidated Production will track all products as they are being made, ensuring that all orders are processed completely using advanced selection techniques.

Once handed over to production, Syscomstyle Consolidated Production will print bar codes at consolidated level, which in turn will be scanned by the operators to advise the Syscom Time & Attendance system that they have carried out this particular part of the job. Once the production is completed the system remembers exactly what details were consolidated and expands them back out into each individual sales order line and books in the finished goods to satisfy the sales order, recording details of the production order on the sales line.

You can rest assured that the Syscomstyle Consolidated Production module will increase customer service levels as you are safe in the knowledge that you have supplied 100% of the order to your customer.

Features

- Consolidates sales orders through to production and despatch
- Handles product variances
- Facilitates part-bundle processing if required
- Ability to update/amend bundle views at any point throughout the production process

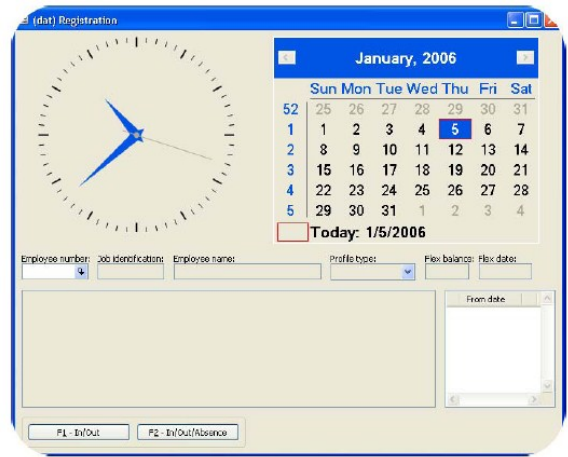
Benefits

- Consolidation of raw material requirements
- Easy to use
- Real-time processes
- Identifies fixed productivity costs
- Reduces wastage and improves production efficiency

Microsoft Shop Floor Control (SFC) & Syscom Time & Attendance

The Shop Floor Control in Microsoft Dynamics AX automates the collection of employee time and attendance information (in real time values), project and production data, giving you accurate insight into your production environment. It is easy for your employees to use and allows the same employee to work on several jobs simultaneously. It also reads and writes bar codes for easier time registration purposes.

Simple operational functions and user-friendly screens minimise training needs for employees. Reports are clearly visible on screen, so users can see the data they are delivering into the system.



The **Syscom Time & Attendance module** is fully integrated into Microsoft SFC and allows you to set Standard Minute Values (SMV) against each production operation rather than real time. For instance, if a shirt would normally take 15 minutes to produce, this is the time that would be awarded to the operator, no more and no less. If they produced two shirts during this time then they would receive more in their pay packet.

Syscom Time & Attendance module provides you with even greater control over your operations and keeps a close eye on your operational costs and profit margins in general.

A unique aspect of Shop Floor Control is the ability to manage complex pay agreements hence facilitating correct payroll data. This further ensures that accurate payroll data is always available and always up to date. Shop Floor Control continuously updates real time feedback on production and projects. This includes both time and item consumption.

Features

Collection of employee time and attendance information • Collection of production data • Payroll calculation • Bar coding support in Microsoft Dynamics AX

Benefits

Improve the efficiency of your shop floor operations with fast registration of accurate and real time product information • Reduce manual data entry with automated collection of employee time and attendance • Save administration time by generating your shop floor payroll quickly and flexibly • Standard Minute Values can be utilised with Syscom Style Time & Attendance



One size doesn't have to fit all!

Whatever the size of your business, Syscomstyle is made to measure